



1 Spitsbrook Cottages Ashes Lane, Hadlow, Tonbridge, TN11 0AP

Jack Charles  
Estate Agents

Guide Price £650,000

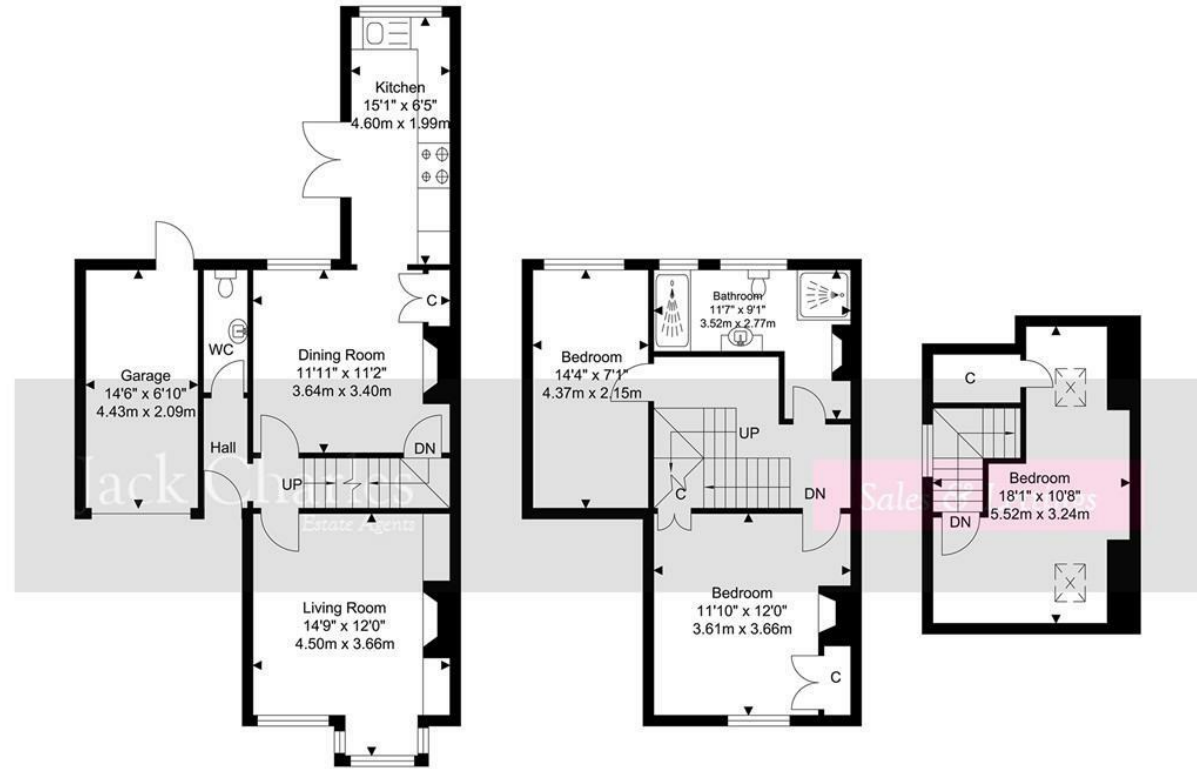
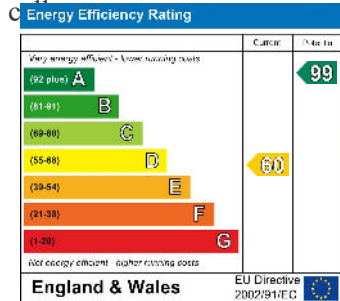
Jack Charles  
Estate Agents

Sales & Lettings

1 Spitsbrook Cottages Ashes Lane, Hadlow, Tonbridge, TN11 0AP

**FLOORPLAN:** Dimensions are maximum unless stated – subject to copyright this plan is intended as a guide to layout only and must not be relied upon for any other purpose.

- Beautifully presented period home
- Semi-rural setting
- Far-reaching countryside views
- Three well-proportioned bedrooms
- Two light-filled reception rooms
- Cast iron fireplaces & wood-burning stove
- Stylish modern bathroom & GF WC
- Gorgeous private walled garden
- Kitchen opening to brick terrace
- Driveway, garage/workshop &



Ground Floor  
Approximate Floor Area  
578.23 SQ.FT.  
(53.72 SQ.M.)

First Floor  
Approximate Floor Area  
433.46 SQ.FT.  
(40.27 SQ.M.)

Second Floor  
Approximate Floor Area  
207.74 SQ.FT.  
(19.30 SQ.M.)

TOTAL APPROX FLOOR AREA 1219.44 SQ.FT. (113.29 SQ. M.)  
For Identification Purposes Only.



**Jack Charles**  
Estate Agents

Sales & Lettings

6 London Road  
Tonbridge Wells  
Kent TN1 1DQ  
Tel: (01892) 621 721

191 High Street  
Tonbridge  
Kent TN9 1BX  
Tel: (01732) 75 75 80

E-mail: [info@jackcharles.co.uk](mailto:info@jackcharles.co.uk)  
[www.jackcharles.co.uk](http://www.jackcharles.co.uk)

**Important Notice:**  
These property details are intended to give a fair description and give guidance to prospective Purchasers/Tenants. They do not constitute an offer or contract of Sale/Tenancy and all measurements are approximate. While every care has been taken in the preparation of these details neither Jack Charles Property Services Ltd nor the Vendor/Landlord accept any liability for any statement contained herein. Jack Charles Property Services Ltd has not tested any services, appliances, equipment or facilities, and nothing in these details should be deemed to be a statement that they are in good working order or that the property is in good structural condition or otherwise. We advise all applicants to commission the appropriate investigations before Exchange of Contracts/entering into a Tenancy Agreement. It should not be assumed that any contents/furnishing, furniture etc. photographed are included in the Sale/Tenancy, nor that the property remains as displayed in the photographs. No person in the employment of Jack Charles Property Service Ltd has authority to make or give any representation or warranty whatever in relation to this property.

## To Be Sold

\*\*Guide Price £650,000 - £675,000\*\*

Watch the full video tour - it gives the best feel for the space, light and setting.

Jack Charles are delighted to present this beautifully maintained 1870 semi-detached home on Ashes Lane, offering a peaceful semi-rural setting near Hadlow. Blending period character with modern comfort, it provides three generous bedrooms - all enjoying superb far-reaching countryside views - and is ideal for families or buyers seeking extra space.

Inside, two light-filled reception rooms offer flexible living and entertaining space, enhanced by period details including cast iron fireplaces and a wood-burning stove. The stylish bathroom adds a contemporary finish, while the kitchen opens directly onto a charming brick terrace and a gorgeous private walled garden - perfect for outdoor dining and quiet relaxation.

Additional features include a cloakroom/WC, extensive storage including a cellar, oak flooring, driveway and a garage/workshop with power and light.

Viewings are recommended.

## Location

This wonderful home is situated on the edge of Tonbridge between the popular village of Hadlow and Tonbridge itself.

Hadlow is a thriving village located on the A26 road between the busy market town of Tonbridge and the county town of Maidstone, with regular bus services to both. The centre of the village is a conservation area with many listed buildings and is known locally as The Square. The community is well-served by local shops, pubs and restaurants, as well as a library and health facilities including a medical centre, dentist and pharmacy. If Kent is the Garden of England then Hadlow must surely be a favourite corner to escape to, surrounded by rural countryside, on the route of many country walks and of course home to the Hadlow College of Agriculture and Horticulture. The historic parish church of St Mary's dates back over a thousand years and the skyline is dominated by the pseudo-Gothic Hadlow Folly. When 18th-century industrialist Walter Barton May thought his wife was having an affair with a local farmer, he wanted to be sure she would never escape his sight. His excessive solution can still be seen today: a 64m tall observation tower that soars above the surrounding Kent landscape from which he could survey the entire village.

