



Northbridge House Hildenborough Road, Shipbourne, Tonbridge, TN11 9QB.

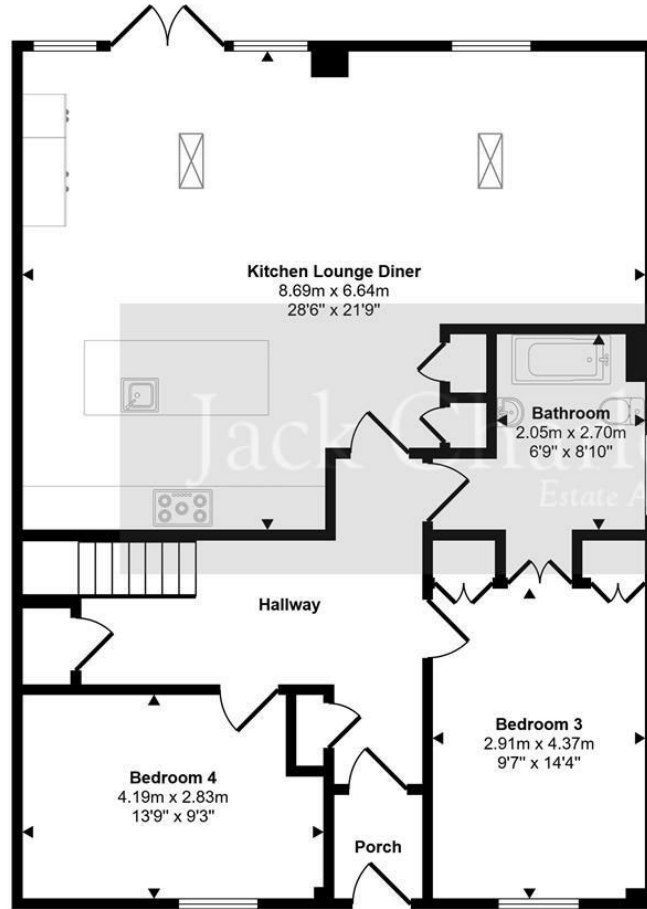
Guide Price £950,000

Jack Charles
Estate Agents

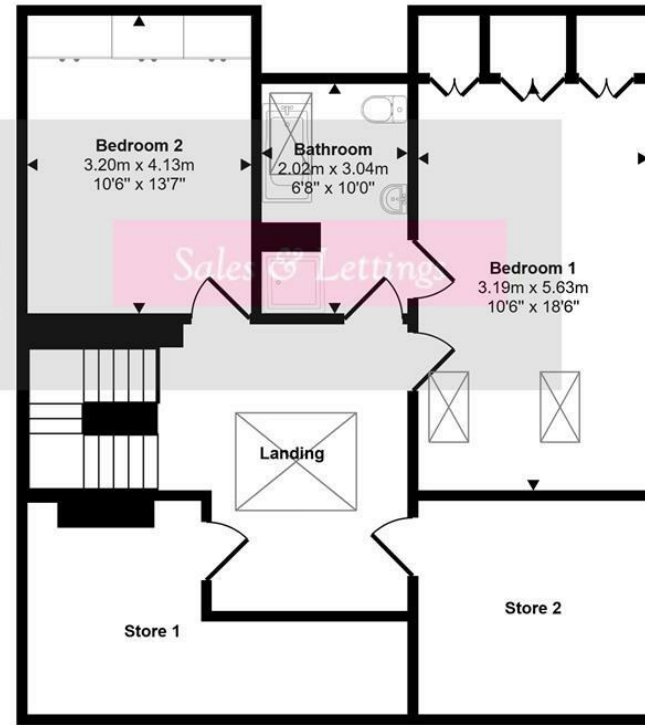
Sales & Lettings

- Semi Detached Barn
- Stunning Open Plan Living / Family / Kitchen
- Parking
- 4 Bedrooms
- Beautiful Location Within Small Cluster Of Property's
- Set Back along a long Shared Drive
- Two Bathrooms
- Large Garden Surrounded By Fields
- Viewings Recommend

FLOORPLAN: Dimensions are maximum unless stated – subject to copyright this plan is intended as a guide to layout only and must not be relied upon for any other purpose.



Ground Floor



First Floor

This floorplan is only for illustrative purposes and is not to scale. Measurements of rooms, doors, windows, and any items are approximate and no responsibility is taken for any error, omission or mis-statement. Icons of items such as bathroom suites are representations only and may not look like the real items. Made with Made Snappy 360.

Important Notice:
 These property details are intended to give a fair description and give guidance to prospective Purchasers/Tenants. They do not constitute an offer or contract of Sale/Tenancy and all measurements are approximate. While every care has been taken in the preparation of these details neither Jack Charles Property Services Ltd nor the Vendor/Landlord accept any liability for any statement contained herein. Jack Charles Property Services Ltd has not tested any services, appliances, equipment or facilities, and nothing in these details should be deemed to be a statement that they are in good working order or that the property is in good structural condition or otherwise. We advise all applicants to commission the appropriate investigations before Exchange of Contracts/entering into a Tenancy Agreement. It should not be assumed that any contents/furnishing, furniture etc. photographed are included in the Sale/Tenancy, nor that the property remains as displayed in the photographs. No person in the employment of Jack Charles Property Service Ltd has authority to make or give any representation or warranty whatever in relation to this property.

To Be Sold

Northbridge House is nestled in the picturesque village of Shipbourne, this stunning semi-detached barn conversion offers a perfect blend of modern living and rural charm. Set back approximately 1/4 mile off the Hildenborough Road, the property is tucked away and surrounded by fields to the rear.

This contemporary home boasts an impressive open-plan family and dining kitchen, featuring a striking part vaulted ceiling and doors leading out to the rear that enhances the sense of space and light. The kitchen is designed for both functionality and style, making it an ideal setting for entertaining. The entrance lobby leads to an impressive hall with turned stairs and doors to the main reception room, Bedroom 4 or 2nd reception room and a further bedroom and bathroom. and to the first floor are another two bedrooms and a jack and jill bathroom, there is a spacious landing and two large eaves storage cupboards.

Outside, the garden offers a wonderful space with a large paved terrace, good sized lawn and to the front the property benefits from parking for two cars and at the rear is a further area of parking.

Situation

Northbridge House is situated in the very sought after village of Shipborne, close to nearby Plaxtol which offers a range of amenities including a general store, post office, public house, church, recreation ground and a primary school.

Comprehensive Shopping: Tonbridge (5.6 miles), Sevenoaks (7 miles), and Bluewater (20 miles).

Mainline Rail Services: Sevenoaks to Charing Cross/London Bridge/Cannon Street/Waterloo East (7.4 miles). Borough Green (4 miles) to London Victoria.

Primary Schools: Ightham, Plaxtol & Shipbourne.

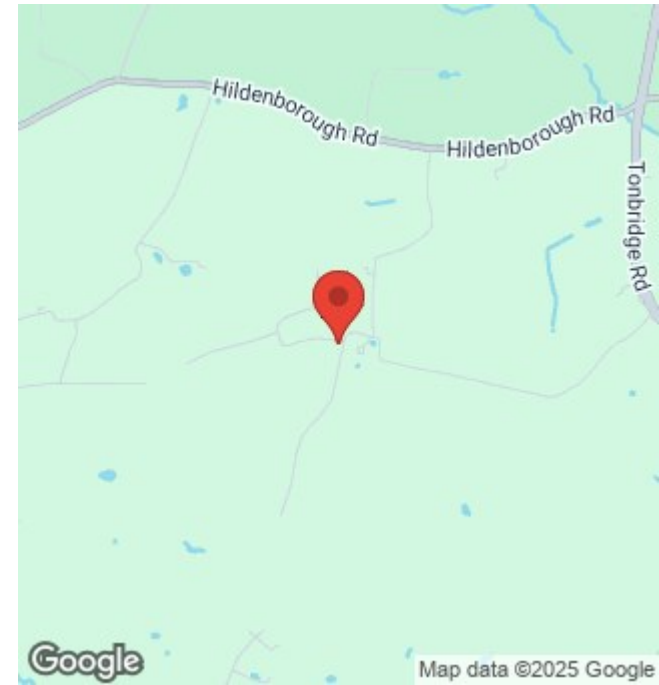
State Schools: Sevenoaks, Borough Green, Tonbridge & Tunbridge Wells.

Private Schools: Sevenoaks, Tonbridge and Walthamstow Hall

Secondary Schools. Sevenoaks, Solefields and New Beacon

Preparatory Schools in Sevenoaks. St Michaels and Russell House Preparatory Schools in Otford. Radnor House in Sundridge.

Leisure Facilities: Plaxtol Council 'Environmental Picnic Field' and dog walking field in the village. Wildernesse Golf Club and Knole Golf Club in Sevenoaks, and Nizels Golf & Leisure Centre in Hildenborough. Sevenoaks Leisure Centre.



Energy Efficiency Rating		Current	Potential
Max energy efficient - lower running costs			
(92-100)	A	82	89
(81-91)	B		
(69-80)	C		
(55-68)	D		
(39-54)	E		
(21-38)	F		
(1-20)	G		
Min energy efficient - higher running costs			
England & Wales		EU Directive 2002/91/EC	





Jack Charles
Estate Agents

Sales & Lettings

<p>6 London Road Tunbridge Wells Kent TN1 1DQ Tel: (01892) 621 721</p>	<p>191 High Street Tonbridge Kent TN9 1BX Tel: (01732) 75 75 80</p>
--	---

E-mail: info@jackcharles.co.uk
www.jackcharles.co.uk

