



6 Mapleton House Mapleton Road, Four Elms, Edenbridge, Kent, TN8 6PL.

Guide Price £550,000

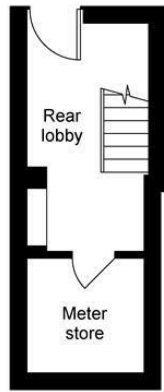
Jack Charles
Estate Agents

Sales & Lettings

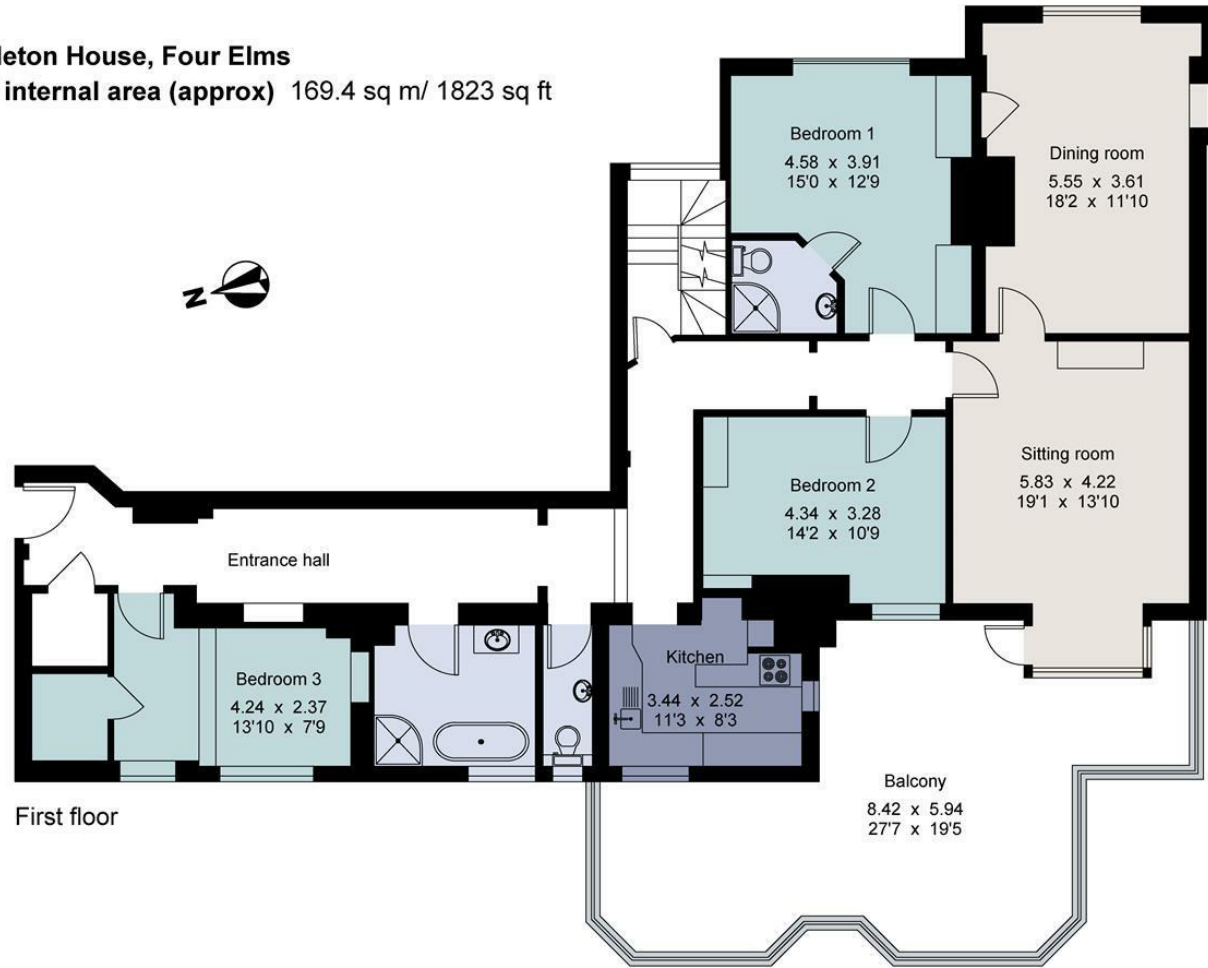
- Impressive 1823 Sqft Apartment
- Ensuite Shower Room & Family Bathroom
- Large Private Terrace
- Three Bedrooms
- Kitchen
- 5 Acres Of Communal Grounds
- Two Large Reception Rooms
- Seperate Cloakroom
- Allocated Parking

FLOORPLAN: Dimensions are maximum unless stated – subject to copyright this plan is intended as a guide to layout only and must not be relied upon for any other purpose.

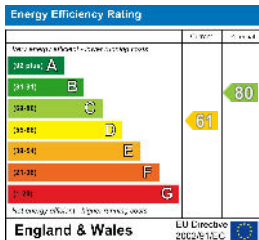
6 Mapleton House, Four Elms
Gross internal area (approx) 169.4 sq m/ 1823 sq ft



Ground floor



First floor



For identification only - Not to scale
 © Trueplan (UK) Limited

Important Notice:
 These property details are intended to give a fair description and give guidance to prospective Purchasers/Tenants. They do not constitute an offer or contract of Sale/Tenancy and all measurements are approximate. While every care has been taken in the preparation of these details neither Jack Charles Property Services Ltd nor the Vendor/Landlord accept any liability for any statement contained herein. Jack Charles Property Services Ltd has not tested any services, appliances, equipment or facilities, and nothing in these details should be deemed to be a statement that they are in good working order or that the property is in good structural condition or otherwise. We advise all applicants to commission the appropriate investigations before Exchange of Contracts/entering into a Tenancy Agreement. It should not be assumed that any contents/furnishing, furniture etc. photographed are included in the Sale/Tenancy, nor that the property remains as displayed in the photographs. No person in the employment of Jack Charles Property Service Ltd has authority to make or give any representation or warranty whatever in relation to this property.

To Be Sold

Jack Charles have the pleasure of offering this stunning and beautifully presented three bedroom first floor apartment set within a magnificent manor house situated on the outskirts of the village of Four Elms. This impressive apartment is 1823 sq ft and complimented by having the benefit of 5 acres of communal grounds.

The property has so many features which include generous room sizes, tall ceilings, and plenty of character throughout. You enter into a long grand entrance hall with doors to all the principle rooms, there is even a door that leads down to a private rear entrance and out to the communal gardens. The principle reception rooms are a super size and the living room has a door leading onto a very large private terrace with plenty of space for dining table, seating areas and planters. The kitchen has been designed to maximise the space and has a range of units and a lovely aspect over the terrace.

The master bedroom has an ensuite shower room and the remaining two bedrooms are serviced by a family bathroom with a roll top bath and separate shower cubicle and a seperate WC. There is plenty of storage too

Mapleton House is set behind electric wrought iron security gates and the property has two allocated parking spaces and ample visitors' spaces. The grounds and woodland are simply stunning with a variety of seating areas including a children's maze, sunken garden and bluebell walks, there are lovely views over surrounding farmland including a HAHA that creates an illusion that the farmland at the rear simply adjoins the woodland. There are lovely views over the farmland and even the famous, Chartwell, home of former Prime Minister Winston Churchill can be seen at certain points of the grounds.

Location

Mapleton House is situated on the edge of the popular village of Four Elms, which features a village pond, cricket pitch, public house, church, and café.

Shopping Facilities: Edenbridge (3.3 miles) provides supermarkets including Waitrose and other high street retailers. Westerham (3.3 miles). Sevenoaks (8.3 miles). Tonbridge (10.7 miles). Bluewater (22.9 miles).

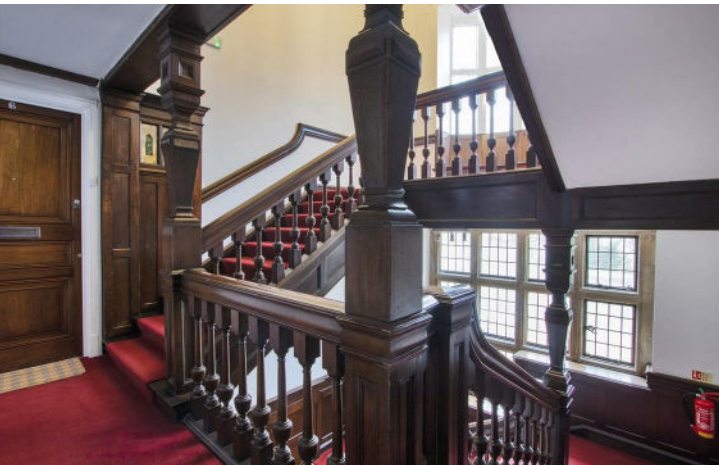
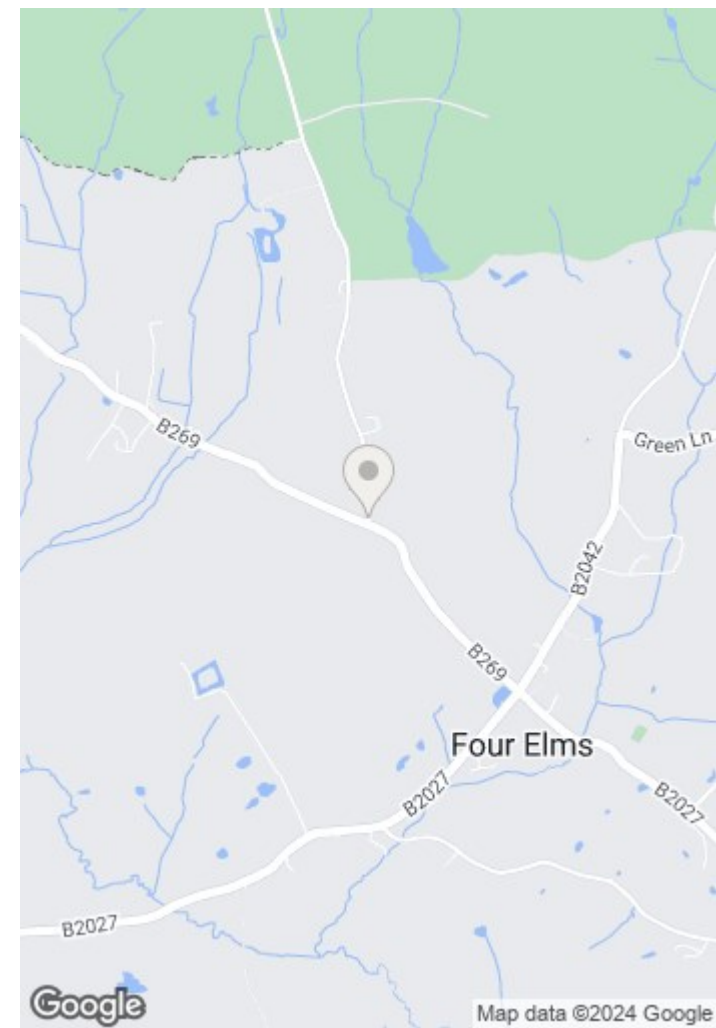
Mainline Rail Services: Sevenoaks and Hildenborough (London Bridge/Cannon Street/ Charing Cross). Hurst Green, Oxted and Edenbridge (London Victoria).

Primary Schools: Four Elms, Crockham Hill, Chiddingstone and Hever.

Secondary Schools: Judd Boys Grammar in Tonbridge, Weald of Kent and Tonbridge Girls Grammar in Tonbridge, Weald of Kent Girls Grammar and Tunbridge Wells Boys Grammar in Sevenoaks. Several state secondary schools in Tonbridge and Sevenoaks.

Private Schools: Sevenoaks and Tonbridge Public Schools, Sevenoaks Preparatory School, Radnor House in Sundridge, Walthamstow Hall Girls School and New Beacon in Sevenoaks.

Leisure Facilities: Bridle paths and walks in the local area. Golf at Westerham, Hever, Tandridge, Chartham Park, Wildernesse, Knole and Nizels in Sevenoaks. Edenbridge Swimming and Leisure Centre. Stately homes include Chartwell and Hever.





Jack Charles
Estate Agents

Sales & Lettings

6 London Road
Tunbridge Wells
Kent TN1 1DQ
Tel: (01892) 621 721

191 High Street
Tonbridge
Kent TN9 1BX
Tel: (01732) 75 75 80

E-mail: info@jackcharles.co.uk
www.jackcharles.co.uk

