



2 James Close Hadlow, Tonbridge, TN11 0LX

Jack Charles  
Estate Agents

Asking price £1,199,000

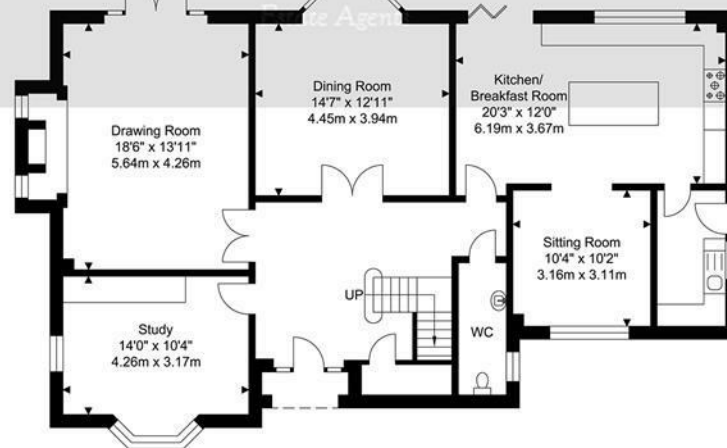
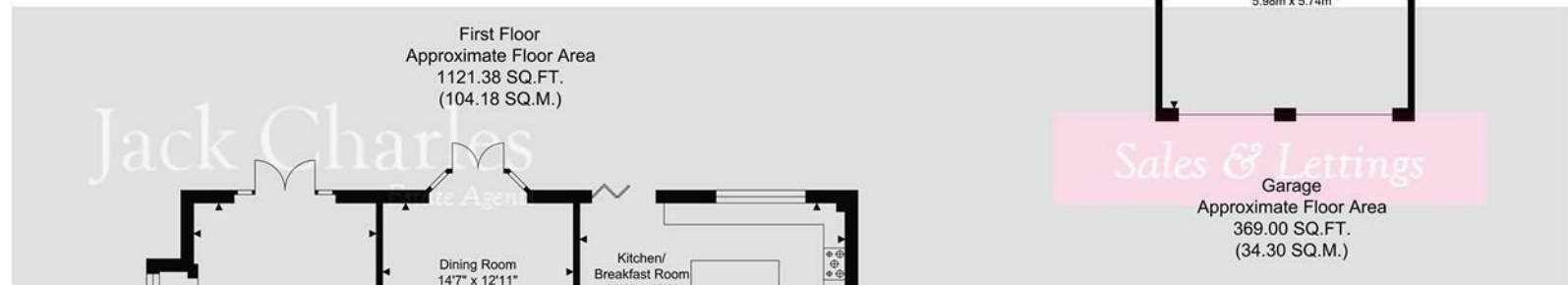
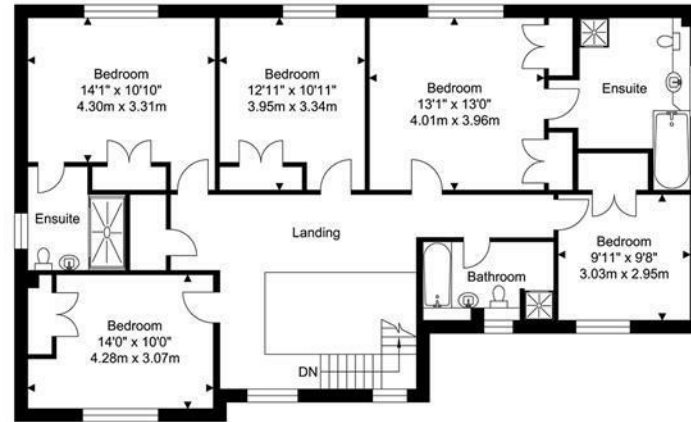
Jack Charles  
Estate Agents

Sales & Lettings



2 James Close  
Hadlow, Tonbridge,  
TN11 0LX

**FLOORPLAN:** Dimensions are maximum unless stated – subject to copyright this plan is intended as a guide to layout only and must not be relied upon for any other purpose.



Ground Floor  
Approximate Floor Area  
1371.53 SQ.FT.  
(127.42 SQ.M.)

First Floor  
Approximate Floor Area  
1121.38 SQ.FT.  
(104.18 SQ.M.)

Sales & Lettings

Garage  
Approximate Floor Area  
369.00 SQ.FT.  
(34.30 SQ.M.)



TOTAL APPROX FLOOR AREA 2862.12 SQ.FT. (265.90 SQ. M.)  
For Identification Purposes Only.

- Substantial Detached House
- Five Double Bedrooms
- 2 Ensuites & Family Bathroom
- Four Reception Rooms & Hall
- Kitchen / Breakfast Room
- Utility Room
- Scope For Expansion STPP
- Well Maintained Gardens
- Double Garage & Parking
- Private Road Of Just 3 Houses

Jack Charles  
Estate Agents

Sales & Lettings

6 London Road  
Tonbridge Wells  
Kent TN11 1DQ  
Tel: (01892) 621 721

191 High Street  
Tonbridge  
Kent TN9 1BX  
Tel: (01732) 75 75 80

E-mail: [info@jackcharles.co.uk](mailto:info@jackcharles.co.uk)  
[www.jackcharles.co.uk](http://www.jackcharles.co.uk)

**Important Notice:**  
These property details are intended to give a fair description and give guidance to prospective Purchasers/Tenants. They do not constitute an offer or contract of Sale/Tenancy and all measurements are approximate. While every care has been taken in the preparation of these details neither Jack Charles Property Services Ltd nor the Vendor/Landlord accept any liability for any statement contained herein. Jack Charles Property Services Ltd has not tested any services, appliances, equipment or facilities, and nothing in these details should be deemed to be a statement that they are in good working order or that the property is in good structural condition or otherwise. We advise all applicants to commission the appropriate investigations before Exchange of Contracts/entering into a Tenancy Agreement. It should not be assumed that any contents/furnishing, furniture etc. photographed are included in the Sale/Tenancy, nor that the property remains as displayed in the photographs. No person in the employment of Jack Charles Property Service Ltd has authority to make or give any representation or warranty whatever in relation to this property.

## To Be Sold

Jack Charles have the pleasure of marketing this substantial detached property situated in a private cul-de-sac of just three properties. The property backs onto farmland and is beautifully presented internally and offers spacious accommodation over two floors comprising a spacious reception hall with turned stairs to first floor, cloakroom / WC, two sets of multi paned doors to the drawing room and dining room, further doors to a study and a substantial kitchen/breakfast room. The drawing room has doors leading out onto the garden, a larger inglenook fireplace with windows either side of the chimney breast, the dining room also has access out onto the garden and the study is a good sized with bespoke fitted cupboards. The kitchen / breakfast room is stunning and has a with central island, it is fitted with a range of matching units and Quartz worktops integrated appliances, door to a useful utility room with access to the outside and space and plumbing for a washing machine. The snug is situated just off the Kitchen and provides a lovely relaxing area. To the first floor there is a galleried landing and doors to five double bedrooms, two with en-suites, and a family bathroom, the first 3 bedrooms over look the rear garden and farmland beyond and bedrooms 4 and 5 over look the front, they all have built in wardrobes. Outside there is ample parking to the front of the property and detached double garage, there is access to the rear via both sides and gardens are beautifully landscaped with various seating areas and brickpaved patio and a large lawned area that surround the property to both side and rear.

## Hadlow

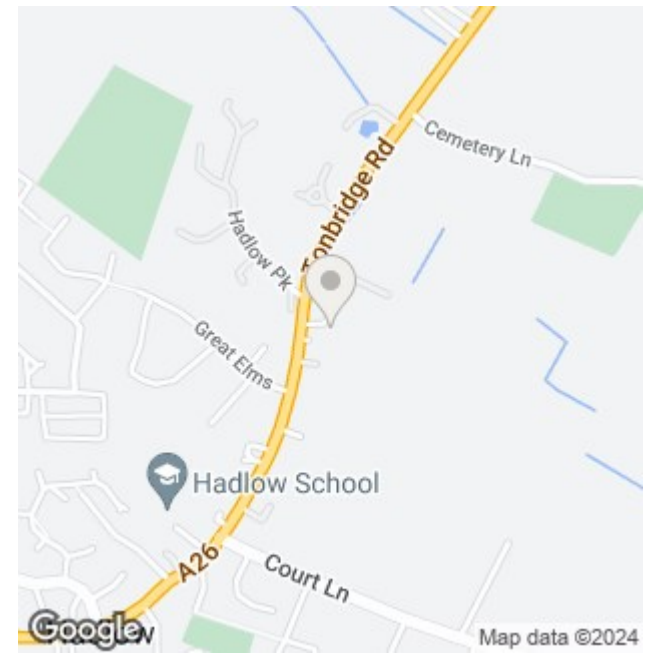
Hadlow is a quaint village on the outskirts of Tonbridge offering good local facilities within a short walk of the property including a post office/convenience store, grocers/off-licence, hair dressers, pharmacy, village bakers, medical centre and primary school. There is also a vintage homeware shop with cafe and the Agricultural College.

Tonbridge High Street and industrial estate is only 4 miles away with a handy bus route linking the two. Sevenoaks, West Malling and Maidstone are also within about a 25 minute drive or less. There are supermarkets in Tonbridge and Kings Hill. Bluewater is only about 22 miles to the North.

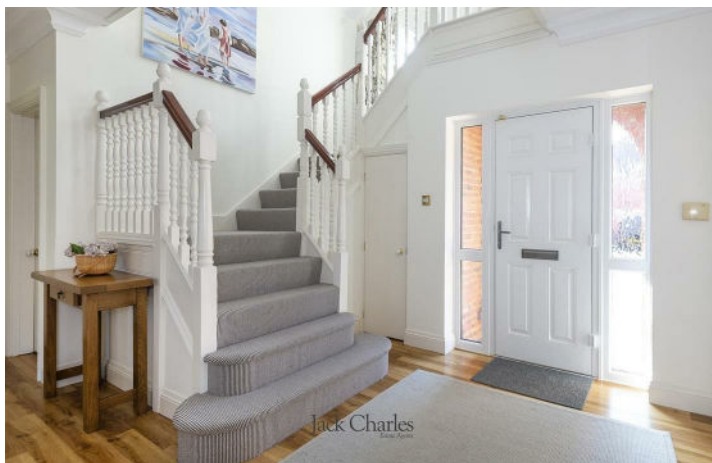
Tonbridge or Hildenborough stations have fast and frequent services to London Charring Cross or Cannon Street (Tonbridge to London Bridge from 32 minutes). West Malling station has services to London Victoria in about an hour.

There are several primary schools in Hadlow and the surrounding villages. Tonbridge, Tunbridge Wells and Maidstone all have grammar schools. Tonbridge also has a highly regarded public school for boys and two popular preparatory schools.

Road connections are good with access to the M20 and M26 only about 7/8 miles to the North, thereby connecting to the M25, international ports and airports.



Energy Efficiency Rating		Current	Target
Very energy efficient - lower energy costs			
(92 plus)	A		
(81-91)	B		
(69-80)	C	75	80
(55-68)	D		
(39-54)	E		
(21-38)	F		
(1-20)	G		
Not energy efficient - higher energy costs			
England & Wales		EU Directive 2002/91/EC	







Jack Charles  
Estate Agents



Jack Charles  
Estate Agents



Jack Charles  
Estate Agents



Jack Charles  
Estate Agents







