



75 Barden Road, Tonbridge, TN9 1UN

£1,850 Per month

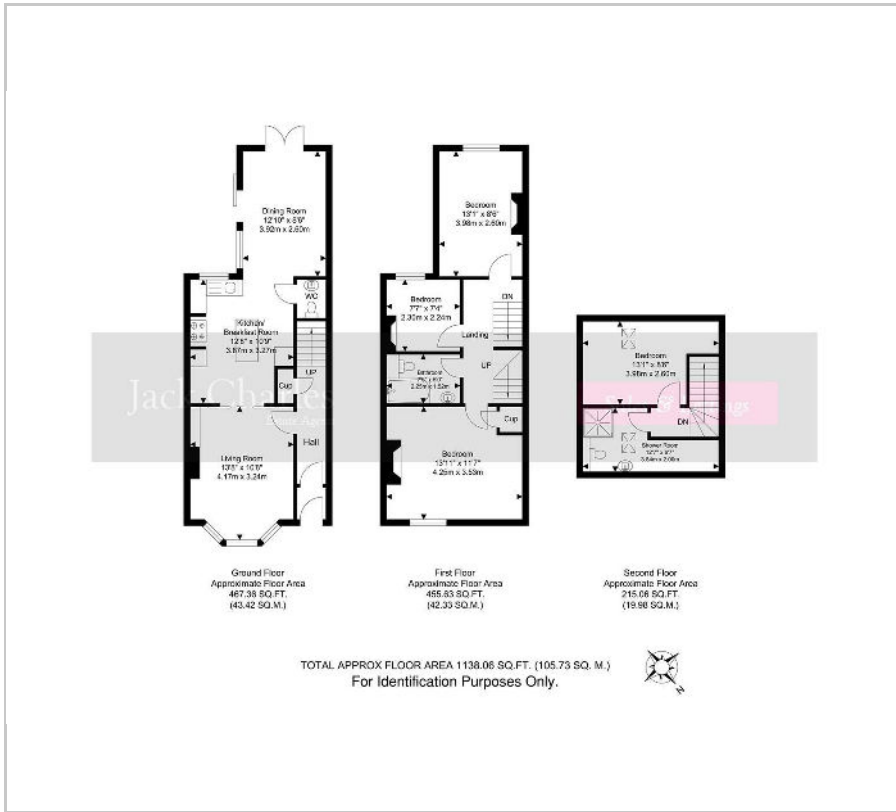
NEW TO THE MARKET! Jack Charles is delighted to bring to the market this stunning 4-bedroom home. This terraced house has lots to offer a family or professional couple. With its close proximity to both primary and secondary schools and with the mainline train station being just a few minutes' walk away, it serves as an ideal modern home for commuters too. In the popular Barden area of town, this property has undergone extensive renovations by the current owners and benefits from a greener way of living with everything powered by electricity and offers under floor heating. The house comprises of 4 bedrooms spanning 3 floors, permit parking outside the property, a garden with storage shed, patio area and small lawn and an open plan kitchen/dining and living room with sliding doors. Viewing comes highly recommended.

- Four bedroom family home
- Close to main line station
- Close to primary and secondary schools
- Modernised throughout
- Walking distance to Tonbridge Park
- Garden
- Permit parking
- Fully electric house
- Available mid September
- EPC Rating B

Viewing

Please contact our Jack Charles Tonbridge Office on 01732 75 75 80 if you wish to arrange a viewing appointment for this property or require further information.

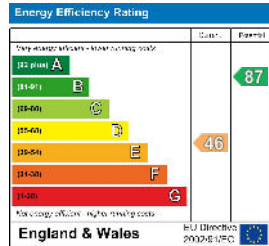
Floor Plan



Area Map



Energy Efficiency Graph



These particulars, whilst believed to be accurate are set out as a general outline only for guidance and do not constitute any part of an offer or contract. Intending purchasers should not rely on them as statements of representation of fact, but must satisfy themselves by inspection or otherwise as to their accuracy. No person in this firm's employment has the authority to make or give any representation or warranty in respect of the property.

t: 01732 75 75 80 | e: tonbridge@jackcharles.co.uk | www.jackcharles.co.uk

Registered in England and Wales Company Number: 12336461 | Registered office: Castle Lodge, Castle Street, Tonbridge, TN9 8BA