



35 Eccleston Court Tovil, Maidstone, ME15 6QZ

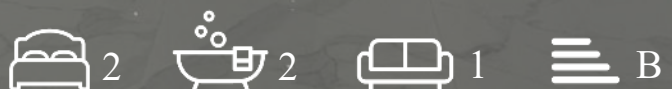
£1,495 Per month

A spacious and modern penthouse apartment located within walking distance to Maidstone East train station. Offering parking for 2 cars in a gated and secure car park. This home offers 2 double bedrooms both with French doors and one with en-suite, main bathroom with shower over bath, a fully integrated kitchen, a large open plan living room with double doors extending out to the decked terrace which offers a sky light, a covered area and is a perfect space for entertaining. Viewing early is recommended.

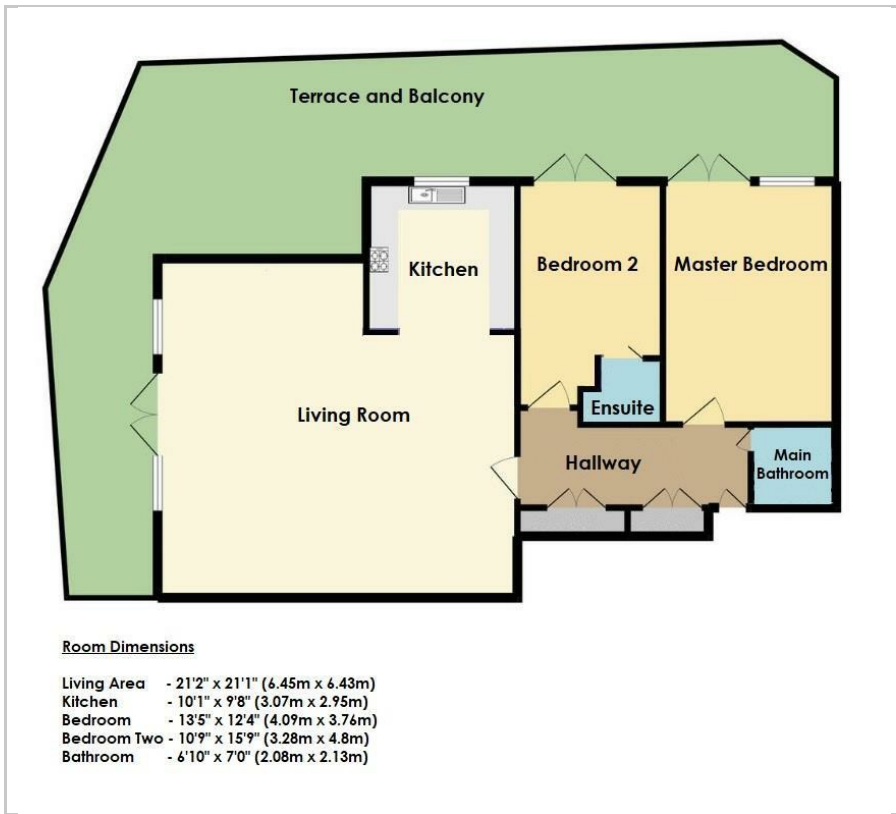
- Penthouse Apartment
- 2 Double Bedrooms
- Gated Parking
- Integrated appliances
- Walking distance to Train Station
- En-suite bathroom
- Large Terrace
- Built in storage
- Far reaching views
- Ready to Let end of May

Viewing

Please contact our Jack Charles Tonbridge Office on 01732 75 75 80 if you wish to arrange a viewing appointment for this property or require further information.



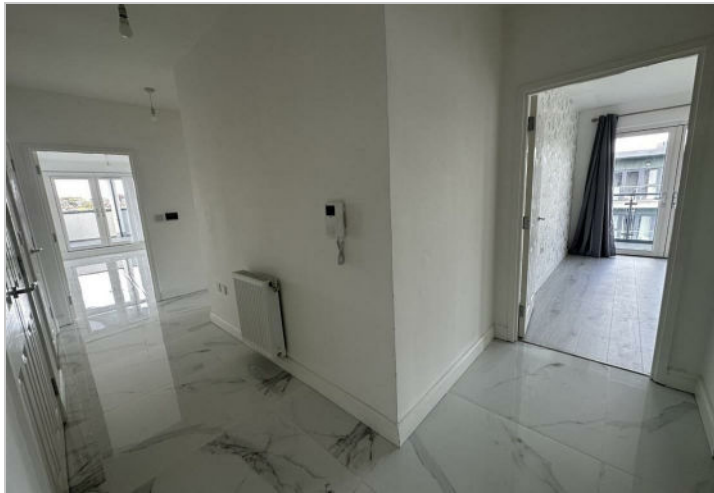
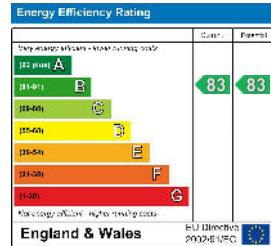
Floor Plan



Area Map



Energy Efficiency Graph



These particulars, whilst believed to be accurate are set out as a general outline only for guidance and do not constitute any part of an offer or contract. Intending purchasers should not rely on them as statements of representation of fact, but must satisfy themselves by inspection or otherwise as to their accuracy. No person in this firm's employment has the authority to make or give any representation or warranty in respect of the property.

t: 01732 75 75 80 | e: tonbridge@jackcharles.co.uk | www.jackcharles.co.uk

Registered in England and Wales Company Number: 12336461 | Registered office: Castle Lodge, Castle Street, Tonbridge, TN9 8BA