



73 Chichester Road, Tonbridge, Kent, TN9 2TJ

Guide Price £525,000 - £550,000

Jack Charles
Estate Agents

Sales & Lettings

73 Chichester Road, Tonbridge,
Kent, TN9 2TJ

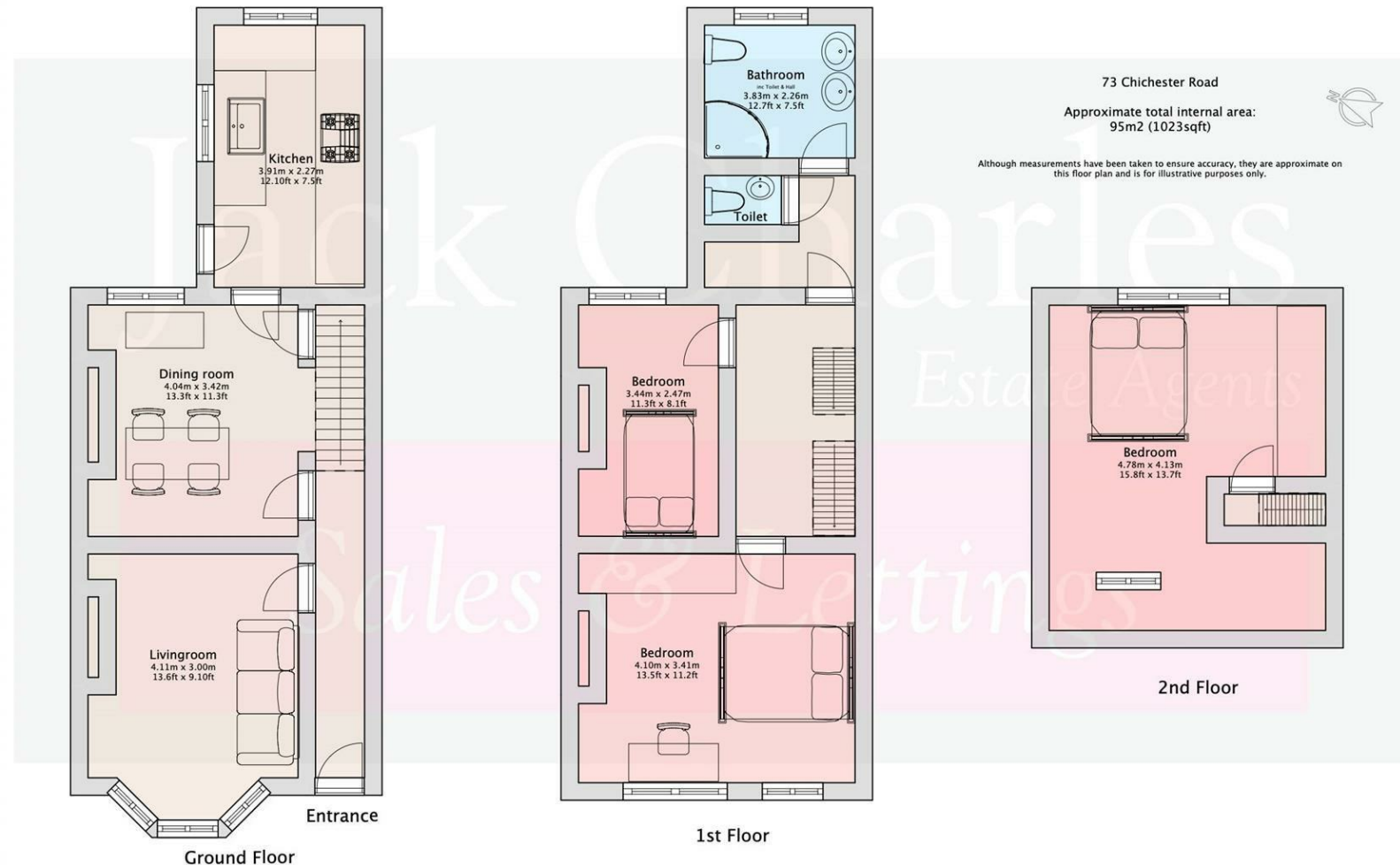
FLOORPLAN: Dimensions are maximum unless stated – subject to copyright this plan is intended as a guide to layout only and must not be relied upon for any other purpose.

- Period Semi Detached House
- Three Double Bedrooms
- New Fitted Kitchen & Shower Room
- Bay Fronted Living Room
- Separate Dining Room
- Recently Refurbished
- Character Features
- Sought After Road
- Lovely Garden & Large Outbuilding
- Viewings Highly Recommended

Jack Charles
Estate Agents

Sales & Lettings

Castle Lodge
Castle Street, Tonbridge
Kent, TN9 1BH
Tel: (01732) 75 75 80
E-mail: info@jackcharles.co.uk
www.jackcharles.co.uk



Important Notice:
These property details are intended to give a fair description and give guidance to prospective Purchasers/Tenants. They do not constitute an offer or contract of Sale/Tenancy and all measurements are approximate. While every care has been taken in the preparation of these details neither Jack Charles Property Services Ltd nor the Vendor/Landlord accept any liability for any statement contained herein. Jack Charles Property Services Ltd has not tested any services, appliances, equipment or facilities, and nothing in these details should be deemed to be a statement that they are in good working order or that the property is in good structural condition or otherwise. We advise all applicants to commission the appropriate investigations before Exchange of Contracts/entering into a Tenancy Agreement. It should not be assumed that any contents/furnishing, furniture etc. photographed are included in the Sale/Tenancy, nor that the property remains as displayed in the photographs. No person in the employment of Jack Charles Property Service Ltd has authority to make or give any representation or warranty whatever in relation to this property.

To Be Sold

Jack Charles are delighted to be appointed as agents for the sale of this wonderful period semi detached home situated in the desirable Meadow Lawn area in a sought after tree lined cul de sac which is close to the main line station, town centre, well regarded schools with recreational facilities and parks found close by. The property ranges over three floors and internally has been recently renovated to now boast entrance hall, bay fronted sitting room and separate dining room with both enjoying attractive centrepiece fireplaces and the latter enjoying a deep under stairs recess with connecting access to a brand new modern fitted kitchen with a light dual aspect onto the attractive rear garden. To the first floor there are two spacious bedrooms rooms and a new shower room w.c. and further cloakroom w.c Stairs rise from the landing to the second floor offering a further double bedroom. Externally to the rear is a fantastic garden offering patio and lawn with a large workshop with power and light which with some improvement could be used as a home office. The property is offered for sale with double glazing and gas central heating. Viewings are highly recommended by sole agents Jack Charles.

Tonbridge Location

Tonbridge is a thriving market town that has developed over the centuries. It boasts a fine example of a 'Motte and Bailey' Norman castle built in the 13th century, set on the banks of the river Medway with the castle grounds abutting Tonbridge Park offering covered/open air swimming pool, tennis courts, children's play areas, miniature railway, putting etc. Tonbridge town offers an excellent range of retail and leisure activities with many High Street stores and a full complement of banks and building societies, together with a selection of coffee shops, restaurants and local inns. The mainline station provides fast commuter links into London (Cannon Street/London Bridge/Charing Cross in approximately 40 minutes) with road links to the M20 & M25 motorways via the nearby A26 and A21. Tonbridge offers a full scale of education from Nursery to College and includes Grammar & Private schools such as the world-renowned Tonbridge School. There are many places of historical interest in the surrounding areas including Penshurst Place and Gardens, Hever Castle, Knole House and Chartwell (once home to Winston Churchill).

