



Flat 5 Chart Lodge Seal Chart, Sevenoaks, Kent, TN15 0ES

Guide Price £550,000 - £600,000

Jack Charles
Estate Agents

Sales & Lettings

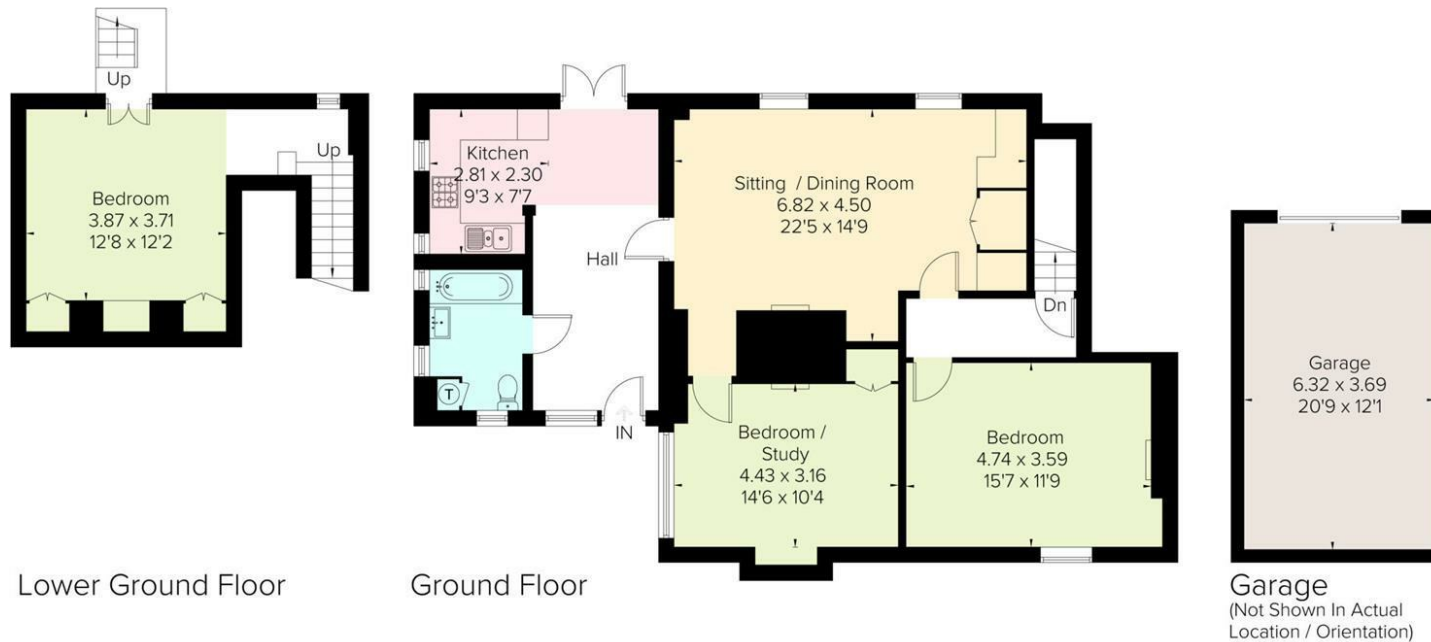
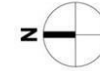
- Guide £550,000 - £600,000
- Large Living Room
- Kitchen

- Three Bedrooms
- Stunning Location
- Communal Gardens

- Duplex Apartment
- Bathroom
- Share Of Freehold

FLOORPLAN: Dimensions are maximum unless stated – subject to copyright this plan is intended as a guide to layout only and must not be relied upon for any other purpose.

Approximate Floor Area = 121.9 sq m / 1312 sq ft
 Garage = 23.3 sq m / 251 sq ft
 Total = 145.2 sq m / 1563 sq ft
 Including Limited Use Area (0.7 sq m / 7 sq ft)



Surveyed and drawn in accordance with the International Property Measurement Standards (IPMS 2: Residential)
 fourwalls-group.com 266339

Important Notice:
 These property details are intended to give a fair description and give guidance to prospective Purchasers/Tenants. They do not constitute an offer or contract of Sale/Tenancy and all measurements are approximate. While every care has been taken in the preparation of these details neither Jack Charles Property Services Ltd nor the Vendor/Landlord accept any liability for any statement contained herein. Jack Charles Property Services Ltd has not tested any services, appliances, equipment or facilities, and nothing in these details should be deemed to be a statement that they are in good working order or that the property is in good structural condition or otherwise. We advise all applicants to commission the appropriate investigations before Exchange of Contracts/entering into a Tenancy Agreement. It should not be assumed that any contents/furnishing, furniture etc. photographed are included in the Sale/Tenancy, nor that the property remains as displayed in the photographs. No person in the employment of Jack Charles Property Service Ltd has authority to make or give any representation or warranty whatever in relation to this property.

To Be Sold

Jack Charles are delighted to offer for sale this wonderful well presented apartment situated within Chart Lodge the property benefits from its own front door and has direct access to a secluded patio and the extensive mature communal gardens.

The accommodation is spacious and extends to 1,312 sqft, comprising an entrance hallway, open plan kitchen with integrated appliances and a breakfast bar, bathroom, good sized sitting/dining room with polished floorboards, large sash windows with built in shutters, fitted storage and a feature fireplace, two double bedrooms on the ground floor. The rear hall offers a staircase that leads down to a third bedroom on the lower ground floor.

Chart Lodge is approached via a sweeping gravelled driveway, which leads to visitor parking and a turning area, here you will also find the property benefits from 2 lockable garages. The property is set within delightful gardens comprising south facing level lawns, featuring topiary, a Yorkstone terrace, a variety of trees and shrubs, woodland, a formal rose garden and vegetable plots. There is also a separate outside storage block with space allocated for each property.

Location

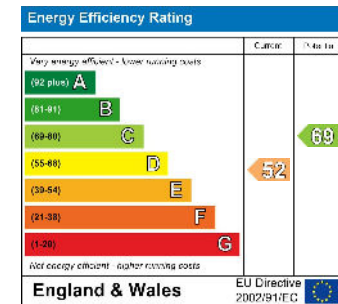
Chart Lodge is situated on Seal Chart in an Area of Outstanding Natural Beauty.

- Shopping: Seal approx. 1.9 miles, Kemsing approx. 3.7 miles, with village shops including butchers, pubs and restaurants. Sevenoaks (town centre) 4.3 miles, with extensive shopping.

- Mainline rail services: Sevenoaks (London Bridge, Cannon Street, Charing Cross.), Kemsing (Victoria, Ashford International), Otford (Victoria, Blackfriars, Ashford International) www.nationalrail.co.uk.

- Schools: Excellent private, grammar and state education opportunities are available at all levels. www.kentpages.co.uk/education.

- Leisure Facilities: Sevenoaks Leisure Centre, numerous golf & tennis clubs. There are also extensive woodland walks immediately accessible from the property.





Jack Charles
Estate Agents

Sales & Lettings

Castle Lodge
Castle Street, Tonbridge
Kent, TN9 1BH
Tel: (01732) 75 75 80
E-mail: info@jackcharles.co.uk
www.jackcharles.co.uk

